



BOLOGNAFIERE REOPENS IN SAFETY.

Tools, support and activities for the restart



CURRENT REGULATIONS

During the Covid-19 emergency the regulations have passed through various evolutions. A number of decrees have been issued that regulate the various economic and social activities. The Reopening Decree of 22 April 2021 finally scheduled the resumption of activities linked to the trade fair sector for **15 June 2021**.

ORDER 28 May 2021 Adoption of the "AEFI Regulatory Protocol for the containment of the spread of Covid-19 at exhibitions and trade fair events". (21A03452) (GU General Series n.135 of 08-06-2021)

The AEFI Regulatory Protocol for the containment of the spread of Covid-19 at exhibitions and trade fair events

ORDER 29 May 2021 Adoption of the "Guidelines for the resumption of economic and social activities".

(GU General Series n.136 of 09-06-2021)

Proceedings of the Conference of the Regions 28 May 2021



<https://www.salute.gov.it/portale/nuovocoronavirus/homeMobileNuovoCoronavirus.jsp>



1 GENERAL ORGANIZATION | VISITORS

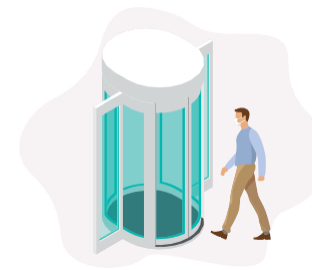
ACCESS TO THE EXHIBITION CENTRE



- An increased number of **entrance points** for the public and socially **distanced queues** with appropriate signs and markings.



- Admission only for those **wearing facemasks**. Distribution and sale of facemasks on site for those without.



- **Temperature measured** using infrared camera-equipped gateways in full respect for privacy. Visitors with a body temperature **higher than 37.5°** will not be admitted.



- Maximum visitor numbers are determined based on the capacity of the spaces in order to **reduce crowding** and ensure personal distancing.



- **Increased use of digital** documentation: online named tickets with **overall checks on visitors** and registration of admissions for at least **14 days** after events in order to facilitate **contact tracing**.



2 GENERAL ORGANIZATION | THE EXHIBITION CENTRE

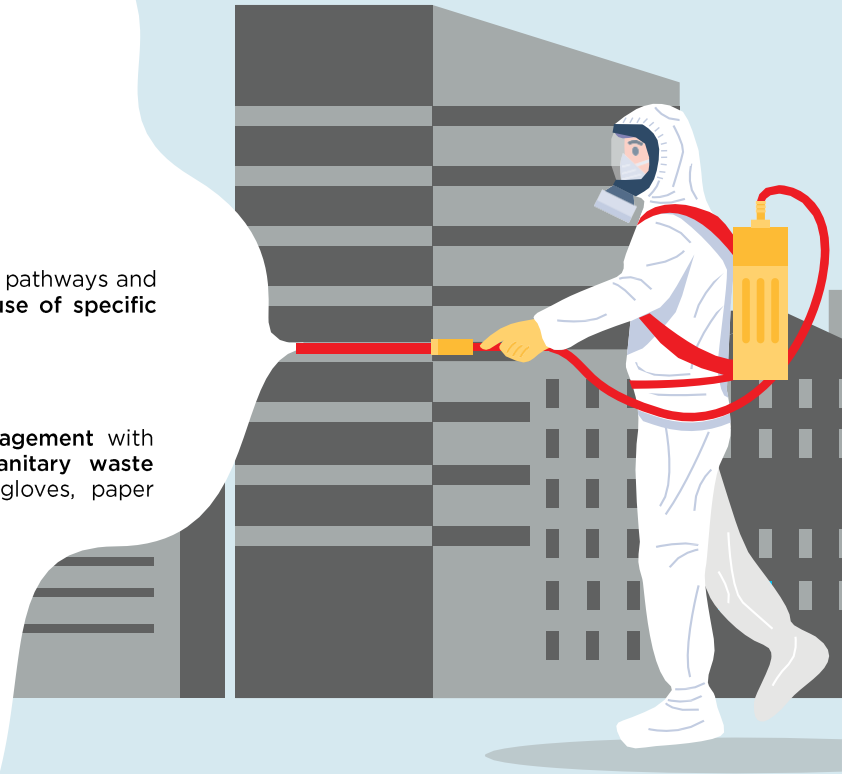
SANITIZATION AND CLEANING

- Substantial attention paid to the sound maintenance of air conditioning/ heating systems.

An increased volume of outside air introduced in order to ensure an adequate renewal of the air and the total avoidance (if technically possible) of recirculating conditioned air, in order to avoid the potential transport of pathogens (bacteria, viruses, etc.).

- Sanitizing hand gel dispensers positioned in various points around the exhibition centre.

- Additional cleaning and sanitization of the bathrooms.
- Additional cleaning of the pathways and common areas with the use of specific sanitizing detergents.
- Differentiated waste management with the introduction of a sanitary waste category for facemasks, gloves, paper tissues and paper towels.

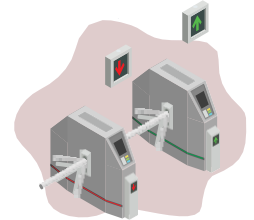




3 GENERAL ORGANIZATION | THE EXHIBITION CENTRE

EXHIBITION CENTRE MANAGEMENT

- Service to check for crowding during the event.
- Large spaces will be used for the common areas and facilities. Lower stand density to increase the area available for movement and consequently increase distance between attendees.
- Positioning of appropriate signposts on the doors to different entry and exit points.
- Signs and notices in various languages explaining the behaviour to adopt (hand washing, distancing, etc.).
- Cloakroom with garment bags and bags for personal objects.
- Widening of pathways to enable social distancing.

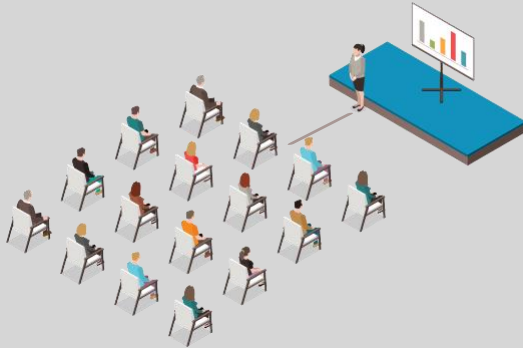




4 GENERAL ORGANIZATION | THE EXHIBITION CENTRE

MANAGEMENT OF THE CONFERENCE ROOMS

- **Conference rooms** that ensure adequate distancing between the chairs.
- **To enable the speakers to talk without having to wear facemasks,** the distance between the table/podium and the front row will be extended.
- **Devices and equipment** available to the speakers will be sanitized prior to and after initial use to protect against possible contamination.
- **Obligation** for all attendees and staff to wear facemasks and to follow the safety procedures, such as frequently sanitizing hands.
- **In meeting areas and meetings** prefer tables of great size and well placed spaced between their.





5 GENERAL ORGANIZATION | THE EXHIBITION CENTRE

FOOD AND DRINK

- An increased number of rest areas and bars to ensure distancing plus the creation of new islands for bars and restaurants.
- Prioritising the use of outdoor spaces for the consumption of meals.
- Customers will have to wear facemasks at all times if they are not sat at a table and will have to maintain a distance of at least 1m between one another.

- Increased use of digital systems for restaurant services, for example:
 - online booking of restaurant spaces
 - booking of catering services or lunchboxes delivered direct to the stand.
- Prioritized use of electronic payment methods.

- Buffets will not be permitted unless organized with sufficient serving staff and the full protection of the foodstuffs. Self-service is possible only for packaged single-portion food products.

- Sanitizing products will be available for clients and staff also at the bars and cafes, in particular at entrances and near the toilets, which will be cleaned a number of times each day.

- The service staff who come into contact with clients will use facemasks and will frequently sanitize their hands with alcohol solutions.





6 GENERAL ORGANIZATION | THE EXHIBITION CENTRE

EMERGENCY MANAGEMENT

The organization of a **Covid emergency plan** that also includes an adequate **medical first aid service** manned by appropriately trained staff and the constant presence of an ambulance during opening at audience of the most expected events

- **Shared protocol that regulates the organization with regards to Covid-19** and that includes an **emergency plan for immediate action in the case of symptoms traceable to Covid-19.**
- **Internal staff adequately trained** to implement the correct procedures.
- **A first aid point at the Service Centre** that is constantly active and the presence of **an ambulance** during opening at audience of the **most expected events.**



As outlined in the current regulations, **the “green pass”* is not required for visitors or exhibitors.** Only employees of the organizers at the Exhibition Centre and their respective suppliers will have to show their green passes prior to accessing the exhibition areas when open to the public.

*“green passes” are intended as:

1. certification of proof of vaccine status. This certification is valid for 9 months from the date of the completion of the vaccine cycle. For vaccines that require a double dose, the vaccination is valid from the 15th day after the administration of the first dose until the scheduled date of the completion of the vaccine cycle .
2. certification of having recovered from Covid-19 infection. This certification is valid for 6 months from the date of recovery.
3. in alternative, a certificate showing a negative molecular or antigen test. This certificate is valid for 48 hours following the test.



7 GENERAL ORGANIZATION | THE EXHIBITORS

MANAGEMENT OF THE EXHIBITION SPACES

Each exhibitor, within the area of their own stand space, will enforce the rules and regulations concerning Covid-19 as the legally responsible party.



- It is possible to organize events and presentations at one's own stand through **online bookings** in order to **avoid crowding**.



- Design **criteria compatible with social distancing**, the sanitization of the spaces and the exchange of air in the hall (e.g. mesh ceilings) are favoured.



- Where possible, stands with **separate entrances and exits** are preferable.



- When setting up the stands, the use of **easily washable materials** and the organization of a **constant sanitization service** for the exhibited samples and the positioning of points for **distributing sanitizing gel** are recommended.



- **Distribution of gadgets: informative, promotional materials and gadgets** will be made available preferably in **self-service displays** (which visitors can access after **sanitizing their hands**) or using **digital systems**.



8 GENERAL ORGANIZATION | THE EXHIBITORS

THE SETTING UP PHASE

During the **setting up phase**, access will be permitted at the entry point outlined in the event regulations where **body temperatures will be measured**. If this is **lower than 37.5°C**, access to the exhibition centre **will be permitted** and the service personnel will assign a coloured bracelet (with different colours for each day) in order to identify the people whose temperature has already been measured and who do not need to have it measured again that day. **If body temperature is higher than 37.5° C admission to the exhibition centre will be denied.**



- Always **maintain social distancing of at least one meter** during the **setting up phases**, where technically possible.

- **Maintain the site area tidy and clean.**

- Also during the setting up phase, a **first aid service is present with specialized medical staff.**



9 GENERAL ORGANIZATION | THE EXHIBITION CENTRE

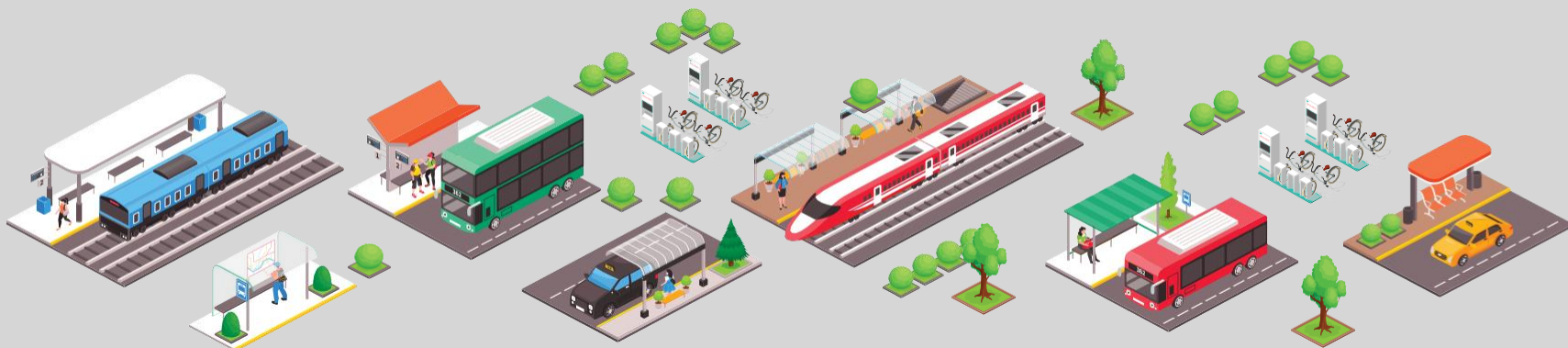
OUTDOOR AREAS AND SERVICES

SERVICES FOR MANAGING THE PUBLIC

During the events the service for the improved management of queues and the avoidance of potential overcrowding will be intensified.

BIKE SHARING & CAR SHARING

Bologna also offers a number of alternative transport systems located near the exhibition centre.





Thank you for your attention